

2 W

DC- 15 GHz

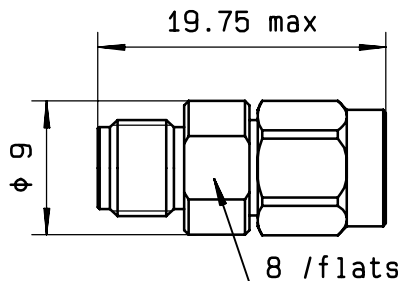
SMA

COAXIAL ATTENUATOR

issue
23. jul. 93

Page
1 / 1

DRAWING



General tolerances: +/- 0.5 mm

R F CHARACTERISTICS

FREQUENCY RANGE : DC - 15 GHz
 IMPEDANCE : 50 Ohms
 ATTENUATION - NOMINAL : 11 dB

FREQUENCY	DC- 4 GHz	4 - 8 GHz	8 -12.4GHz	12.4- 15 GHz
V.S.W.R	<= 1.20	<= 1.25	<= 1.30	<= 1.35
DEVIATION (dB)	+0.5 / -0.5	+0.6 / -0.6	+0.7 / -0.7	+0.9 / -0.9

TEMPERATURE SENSITIVITY : $4 \times 10^{-4} \frac{\text{dB}}{\text{dB} \times ^\circ\text{C}}$

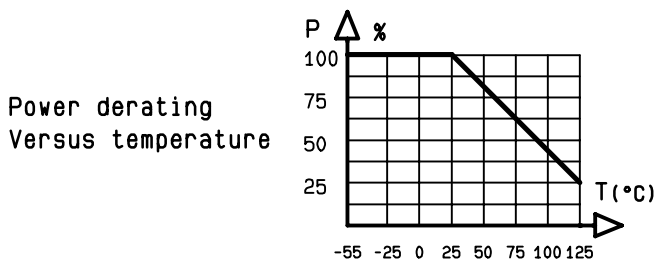
PEAK POWER at 25°C (1µs,1%.) : 100 W
 AVERAGE POWER at 25°C : 2 W

MECHANICAL CHARACTERISTICS

CONNECTORS : SMA male/female per MIL-C 39012
 WEIGHT : < 5 g

ENVIRONMENTAL CHARACTERISTICS

OPERATING TEMPERATURE RANGE (°C) : -55 , +125
 STORAGE TEMPERATURE RANGE (°C) : -55 , +125



This information is given as an indication. In the continual goal to improve our products, we reserve the right to make any modifications judged necessary

QUALITY
Dpt app. _____
 CREATION
 PEN : CAT
 EP : _____
 Nom : HS
 Date: 23. jul. 93

ISSUE

REVISIONS

NAME

RADIALL®

101. Philibert Hoffmann | Phone: 33.1.49353535
 - Z.I Ouest - | Fax : 33.1.48546363
 93116 ROSNY/BOIS Cedex-FRANCE | Tvx RADIA 235220F

4112-9211